



氰化物的离子色谱仪-柱后衍生法形态分析 (2) — LC

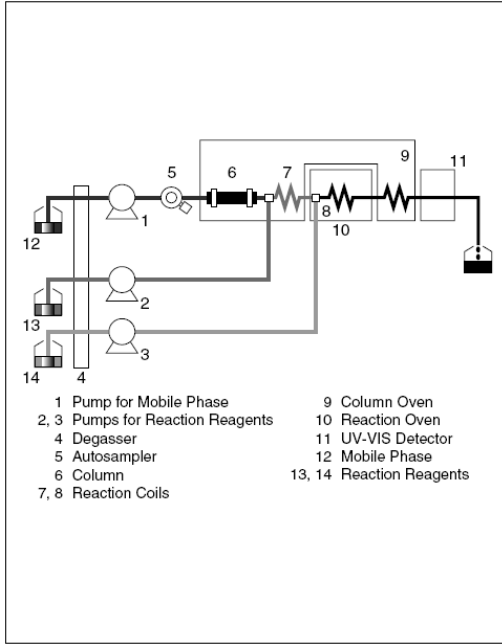


图 1.14.3 流程图

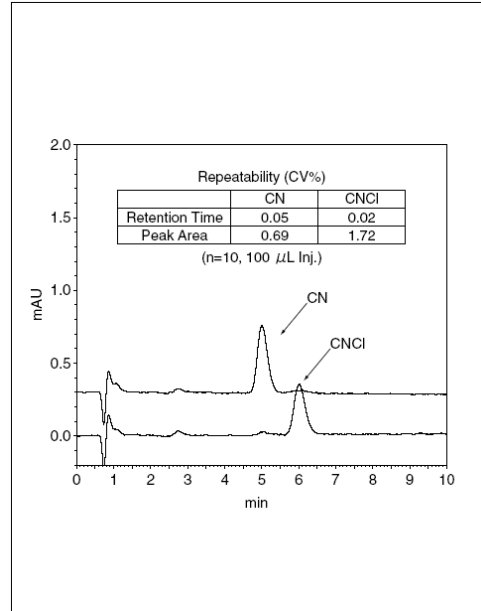


图 1.14.4 氰化物离子, 氯化氰标准品的重现性 (各1 μ g/L)

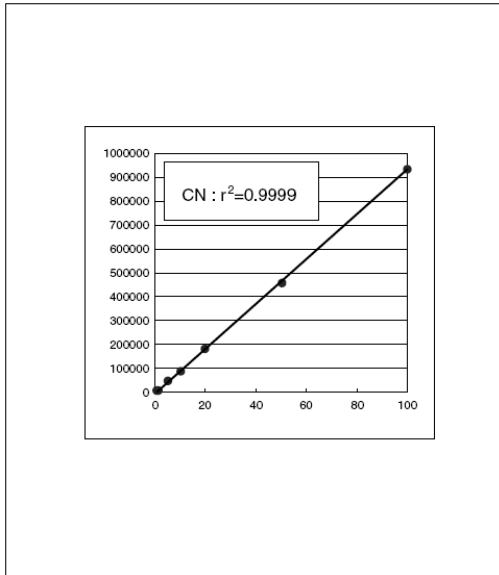


图 1.14.5 氰化物离子的工作曲线 (0.5~100 μ g/L)

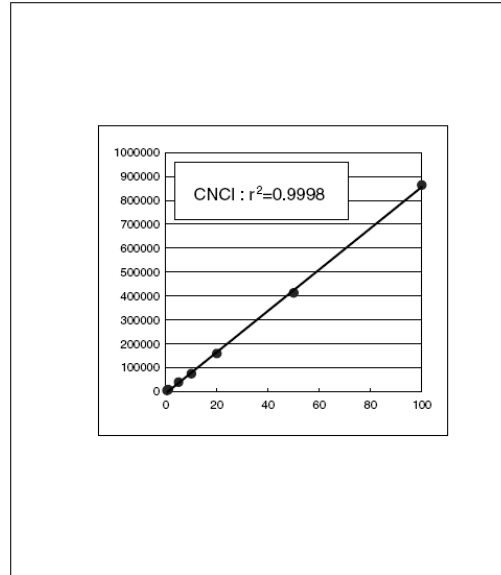


图 1.14.6 氯化氰的工作曲线 (0.5~100 μ g/L)